



SL-1200 Double Hooks Tire Debeader



• Waste tires



• Tire after debeading

Introduction

SL-1200 Double hooks tire debeader is used to pull out both bead wires from the waste tires at the same time before cutting and shredding process. It mainly consists of motor, speed reducer, transmission gears, round hooks, cross-hole plate, support boards, base plate, bearing pedestal, feeding device, and control cabinet.

Structure and principle

- ◆ This machine adopts integral base pedestal, easy installation and operation, it is the most efficient debeader in current market;
- ◆ Twin hooks design to pull out bead wires at 3 times the speed of the single hook debeader;
- ◆ Mechanical transmission and round hook design, high efficient and small occupation area;
- ◆ Circuit protection system, safety protection frame to make the operation easy and safe;
- ◆ Round hook, cross hole plate and gears are made of materials after special treatment, wearable, heavy-duty, easy maintenance and long life.

Main Technical Parameter

Name	SL-1200	Pulling force (T)	30
Motor power (kw)	15	Dimensions (mm)	2250*1650*1500
Capacity (pos/hour)	60-100	Weight (kg)	6500
Outer diameter of the tire (mm)	≤1200		

Hydraulic Tire Cutter



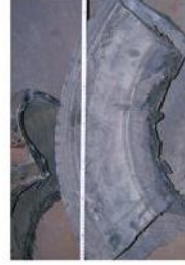
ZQJ-1200



• Debanded tire



• Cut tires scraps



• Cut tires scraps

Introduction

This machine is used to cut all kinds of tires, including steel radial tires, fiber tires. The tires need to be pulled out steel loops before being cut into blocks.

It mainly consists of motor, rotating platform, rolling shelf, fixed knife shelf, cutting blade shelf, body frame, cylinder, hydraulic station, and control cabinet, etc.

Structure and principle

- ◆ The blades are made of high quality imported materials, wear-proof, heavy-duty and long life;
- The rolling shelf and rotary platform make the operation easy and quick;
- ◆ Automatic reposition function after each cut;
- ◆ With blocking pole to avoid tires sticking;
- ◆ The hydraulic system adopts international advanced constant power variable plunger pump technology, low noise , and high pressure and improved the stability and life of the machine.

Model	QDJ-1200	ZQJ-120
Capacity(pcs/hr)	20-40	20-40
Type of tires(mm)	≤Φ1200	≤Φ1200
Motor Power(Kw)	5.5	7.5
Working pressure(Mpa)	8	12
Weight(Kg)	2000	2000